

**HŌHEPA HAPPENINGS**  
**HŌHEPA WELLINGTON**  
JUNE 2025



**Hōhepa**

every life fully lived



# SUCCESS ON THE GREEN!

**May brought a huge milestone for Hōhepa Wellington as we held our very first fundraising event - and we went BIG!**

With the generous support of the Paraparaumu Beach Golf Club, we were able to bring our dreams of a local fundraising event to fruition. We hosted **23 teams of eager players** - a fantastic turnout considering we had to postpone from our original date due to *terrible* weather! The new date gave us a perfect day, and everyone had a fantastic time on the course. Once the golf was done, the players headed back to the clubhouse for raffles, auctions, dinner and a well earned drink or two.



Due to the generosity and community spirit on the day the event raised around **\$26,000!** Over the coming months we'll share with you the incredible impact these funds have on the lives of the people we support. Of course, none of this would have been possible without contributions from donors and sponsors - see our Facebook post highlighting **all of our event supporters.**



And who took out top honours (and bragging rights) on the day? None other than the guys from Tuohy Homes - the team who built the four new homes at our Otaihangā site! **Congratulations Brent and team - we look forward to seeing you attempt to defend your title next year!**

It takes a lot of work behind the scenes to make an event like this a success. We'd like to make **special mention of Mark Sorenson**, whose son Grayson is supported by Hōhepa Wellington, who put in a huge effort and a lot of hours to make this event happen.

# FROM OUR GENERAL MANAGER

Linda Windley



With winter settling in around Hōhepa Wellington, our sunny Golf Day feels like a warm memory. What an inspiring success - I was truly delighted, and remain deeply grateful to the many hands that made it possible. It was also a joy to come together in late April for our Harvest Festival, celebrating the abundance we nurture on this whenua. Thanks to successful grants, and the growing momentum of volunteer support, we're seeing exciting progress across our gardens and nursery - opening up new possibilities and a richer range of meaningful experiences for the people we support.

With these endeavours gaining momentum, our commitment to extending opportunities to the wider local disability community is feeling increasingly tangible. From a leadership development perspective, it's been rewarding to spend purposeful time with leaders across our organisation - nurturing connection, fostering shared learning, and strengthening our organisational maturity.

Ngā manaakitanga o te takurua - winter wishes to you and yours.

**Linda**

*"Not that which is inspires the creation, but that which may be; not the actual, but the possible" -  
Rudolf Steiner*

## FROM GOOD TO GREAT

We're building a culture where **open, honest communication** is not just welcomed - it's essential. Whether it's an idea, a concern, or simply a new way of looking at things, we want to hear it. Our new 'Something on Your Mind?' button makes it easier for staff to share their thoughts.

We **welcome this spirit of open dialogue insights from our wider whānau too**. So please, reach out whenever you have something to share.



In early May we harnessed the skills and knowledge of Herbert Wolpert to deliver an **organisational development session** with our Senior Leadership Team, House Managers, and office support roles. The session focused on the changes that shape organisations as they grow and develop, and recognising that evolution here at Hōhepa Wellington. While everyone has different levels of comfort with change, reflecting on our **collective journey and growth helps us to connect over our shared vision**.

Later in May we held a session with all of our Service Managers, House Managers and Team Leaders for a day of connection, learning, and growth. With a focus on understanding each role's purpose and connection, and the **essential capabilities to succeed** across each of the service delivery roles.

The rich learnings and contributions from this sessions are being used in the development of a **service delivery competency framework** which will:

- clearly articulate the expected skills and knowledge across the roles,
- support **career pathway conversations**, and
- aid in the consistent recruitment of individuals into roles where their competency and potential aligns with our organisational needs.





# WHAT'S HAPPENING ONSITE?

As always, there's plenty going on to take care of Hōhepa Wellington's whenua, connect with nature, and improve our amenities.



The **relocation of gardens** from the village to 39 Otaihangā marks an exciting step in our long-term development plans - enabling the expansion of our gardens and nursery areas, while also freeing up valuable space within the village.

- Large trees were recently felled, with their trunk rounds repurposed as the foundation of our new composting site.
- The house at 39 Otaihangā has received a thorough tidy-up, now offering a welcoming breakout space for our volunteers, Support Workers and people we support spending time in the gardens and nursery.
- Our new raised garden beds will soon be constructed and planted, supporting both productivity and community involvement.



A new, more robust, **sewerage system** has been installed in the village to better meet our community's needs.



**Plants have been ordered for the hillside** behind the new homes in the village, bringing a host of benefits - from enhancing privacy and dampening noise, to supporting slope stability and long-term ecological resilience.



## MEET THE LOCALS *with Grayson*

In each newsletter, Grayson will be posing hard-hitting questions to a member of our community. This time he's with Jason Grundy, one of our two Service Managers

What is your favourite food? And what food don't you like?

*I really like risotto. And I don't like custard.*

What TV & movies do you like?

*I enjoy watching movies, more than tv. My absolute favourite movie is Star Wars.*

Where did you grow up?

*I grew up on the Isle of Wight, an island off the south coast of England.*

Do you have any pets?

*Yes, we have two dogs (Otis and Bear)*



What's something you're really good at?  
*I'm pretty handy at running and cycling.*

Can you play any instruments?  
*The clarinet*

Do you snore?  
*No*

# A WORD FROM THE BOARD

## Nikki Fisher



I have a background in commercial law and executive leadership. I'm also a mother, and try to instill in my children the importance of being of service to others. I joined the Hōhepa board for this reason, and because the skills and experiences from my professional career fit well with the role. As a long time yoga practitioner, Hōhepa Wellington's anthroposophical approach also resonates strongly given the many symmetries it offers with yoga philosophy. Along with my role on the board I chair the Risk Committee, where our focus is on working with management to identify, assess and manage/mitigate risks to the organisation. Risks such as last year's government funding freeze that required us to pivot from our plans to expand our services to focusing on enhancing aspects of our existing service. While the freeze was unexpected, the opportunity to focus efforts on building our workforce capability and strengthening our values and culture has been valuable and enabled us to set up stronger foundations for the future growth of our services at Otaihangā.

I feel very fortunate to be part of the wider Hōhepa whānau and have a small role to play in contributing to 'every life fully lived' for the people we support.

---

## HELPING HANDS

At Hōhepa Wellington, there's always more we'd love to accomplish than time and resources allow. Fortunately, our newly-formed partnership with Volunteer Kāpiti, a local organisation dedicated to connecting volunteers with meaningful opportunities, has successfully found us two super-keen, regular volunteers to support Ina and Jeremiah with our gardens and grounds work. **A huge welcome and ngā mihi to Caroline and Jack!**

Volunteer Kāpiti also recently connected us with Year 13 students from **Paraparaumu College who are completing their NZQA in Community Work**. The first group of students put in an incredible effort digging holes for future planting, and lending a hand tidying up around the site. We're expecting another group of students in July, to help us with more manual jobs.

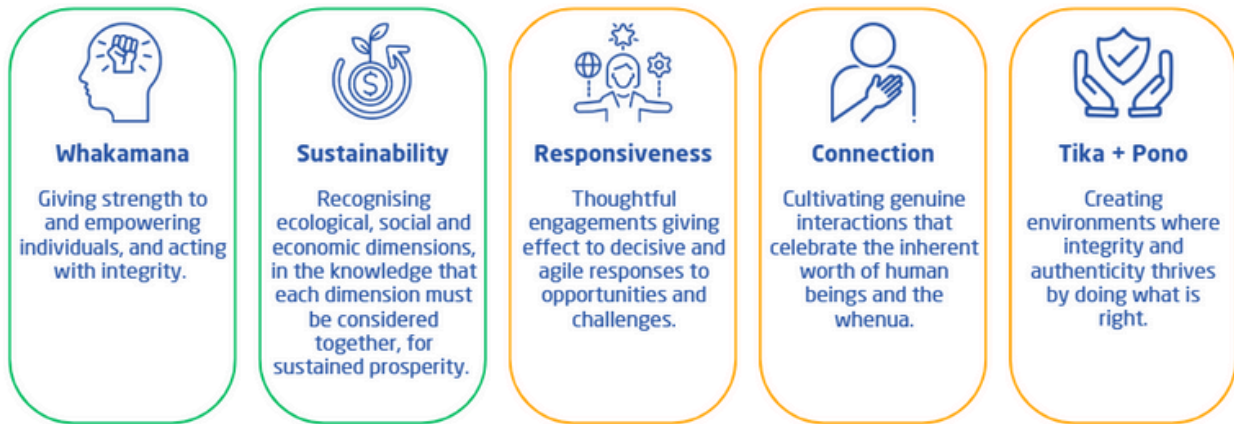
If you're interested in volunteering with us there are plenty of opportunities to spend some time helping with garden work, compost management, and plant care. Please reach out to Shelley Elliott on 0272515422 or [Shelley.Elliott@hohepawellington.com](mailto:Shelley.Elliott@hohepawellington.com)





# LIVING OUR VALUES

We live our values in all sorts of ways - sometimes it's as simple as taking a moment to say a **heartfelt thanks**, other times it's as big as kicking off a **whole new project**. However it shows up, it matters.



Dear Navjot.  
Thank you for the lovely  
Van ride.  
Julian.

Few gestures embody true **responsiveness** like a handwritten note of thanks.

## NICK'S COMPOST COLLECTIVE



**A fantastic new composting initiative is underway at Te Koha Aroha, thanks to Nick and the dedicated support worker team.**

To get things rolling, Nick delivered compost bins to each house and tested out a brand-new compost trolley around the village. Now, every Thursday morning, he makes the rounds - gathering the green waste that each house has been carefully adding to their bins. Once all the bins are collected, Nick pulls the trolley up to the nursery to contribute to the thriving community compost project.



This initiative beautifully reflects our shared values of:

**Sustainability:** honouring the use of resources grown and used here onsite.

**Whakamana:** empowering others by nurturing their skills and confidence.

**Connection:** cultivating belonging through shared purpose.



## GARDENS FOR ALL | KAPITI COAST DISTRICT COUNCIL

We were over the moon to be successful in our application to **Kāpiti Coast District Council's Community Grant**, which supports community-based programmes and events that contribute to achieving positive social outcomes for people living in Kāpiti.

With KCDC's generous support we have purchased **FOUR raised gardens**. Raised gardens are elevated a comfortable height, reducing the need for bending, kneeling, or stooping ensuring the restorative benefits of gardening and connection with nature are available to all. The raised garden kitsets - like those shown in these photos, but raised to waist height - are due to arrive this week. Watch this space!



## CREATING CONNECTIONS THROUGH MUSIC | MUSICHELPS



We're thrilled to share another exciting success in the grant space: support from [MusicHelps](#), a registered charity championing hundreds of projects across Aotearoa that harness the transformative power of music. Thanks to their generosity, we've received **funding for 12 weeks of music therapy sessions** with a qualified therapist.

Group music therapy offers a vibrant and enriching experience for people with intellectual disabilities - **fostering connection, communication, and confidence through the shared joy of music-making.**

Our sights are set on securing additional funding to extend these sessions across the full year - and look forward to sharing more good news on this front in the near future.

---

## WELCOMES AND FAREWELLS

Over the last couple of months we welcomed new Support Workers Tim, Danilo, Morven, Gordon, Nikki and Helen to Hōhepa. Along with new casual Support Workers Grince and Linda. They've been orientating at homes across the Otaihangā village, and our homes in Paraparaumu, and we're **delighted to have them join our Hōhepa whānau**. We've also had one of our Support Workers transition from permanent to casual to best accommodate their work-life balance.

Over this time we bid farewell to 4 full-time and 3 casual Support Workers, and we wish them all well with their next steps.





# HARVEST FESTIVAL FUN



Our recent Harvest Festival was a **beautiful expression of gratitude** - for the land, the hands that tend it, and the community that gathers to share its abundance. Beneath golden autumn skies, we came together to celebrate the fruits of our collective mahi.

From the stirring of biodynamic preparations to the joy of painting pumpkins, the day was filled with moments that nourished body, soul, and spirit.

At the heart of our Harvest Festival lies a core intention: to care for the land that nourishes us. Through **biodynamic practices, seasonal rhythms, and conscious choices**, we're not only celebrating abundance - we're cultivating a future rooted in sustainability.

Thank you to everyone who contributed - whether by harvesting, stirring, setting up, or simply showing up with open hearts.







## **KUA HINGA TE TŌTARA I TE WAONUI-A-TĀNE | A TŌTARA HAS FALLEN IN THE GREAT FOREST OF TĀNE**

We wish to acknowledge the recent passing of Koro Don Rakauteora Te Maipi. Koro Don shared his wisdom, guidance and humour generously with Hōhepa Wellington over many years. We are richer for having known him, and deeply grateful for the lessons he imparted.

***Nā tō rourou, nā taku rourou, ka ora ai te iwi | With your basket and my basket, the people will thrive.***

His contributions helped sustain and uplift us all.



---

We're working hard to raise Hōhepa Wellington's profile and share all the incredible things the people we support, and our staff, do every day.

Please follow us on [Facebook](#) and [LinkedIn](#). The more you like, share, and comment the better!

# Hōhepa

every life fully lived

40 Pitoitoi Street, Otaihanga  
Paraparaumu  
Phone: [+64 4 297 2102](tel:+6442972102)  
Email: [admin@hohepawellington.com](mailto:admin@hohepawellington.com)

**Donations are always appreciated.**  
Please give us a call or visit:  
<https://www.hohepawellington.com/make-a-donation/>